



# Property Tax Declarations in MyTax Illinois

**Max Letterly**  
**Adrienne Suits Bailey**

[Max.letterly@illinois.gov](mailto:Max.letterly@illinois.gov)

[Adrienne.bailey@illinois.gov](mailto:Adrienne.bailey@illinois.gov)

Illinois Department of Revenue

# MyTax Illinois Today

- Existing online account management system in production at IDOR
- Allows users to file returns and applications, make payments, and manage tax accounts in one portal
- Delegated access levels are available to control who has access and what functions they can perform when logged in

# Current PTAX Environment

- City of Chicago and Cook County
  - EZ DEC – Online filing option for Real Estate Transfer Declarations
- All other counties
  - Pre-purchase stamps or maintain machines
  - Paper PTAX forms

# The Plan...

- Streamline the state's real property transfer tax process
  - Online filing option for real estate transfer declarations
  - FREE solution for all counties
  - Integrate with existing software packages
    - County Recorders, County Assessors, RED-1
  - Provide function-driven access
    - Note: County Recorder **must** participate for the Dec initiators to be able to complete the PTAX-203 electronically in that county

# Timeline

- Outreach efforts began in May
  - Partner with associations representing county officials
  - Vendor participation
- In-house development has begun
- Hands-on user testing and focus groups will take place in early December
- Implementation in MyTax Illinois in March 2014

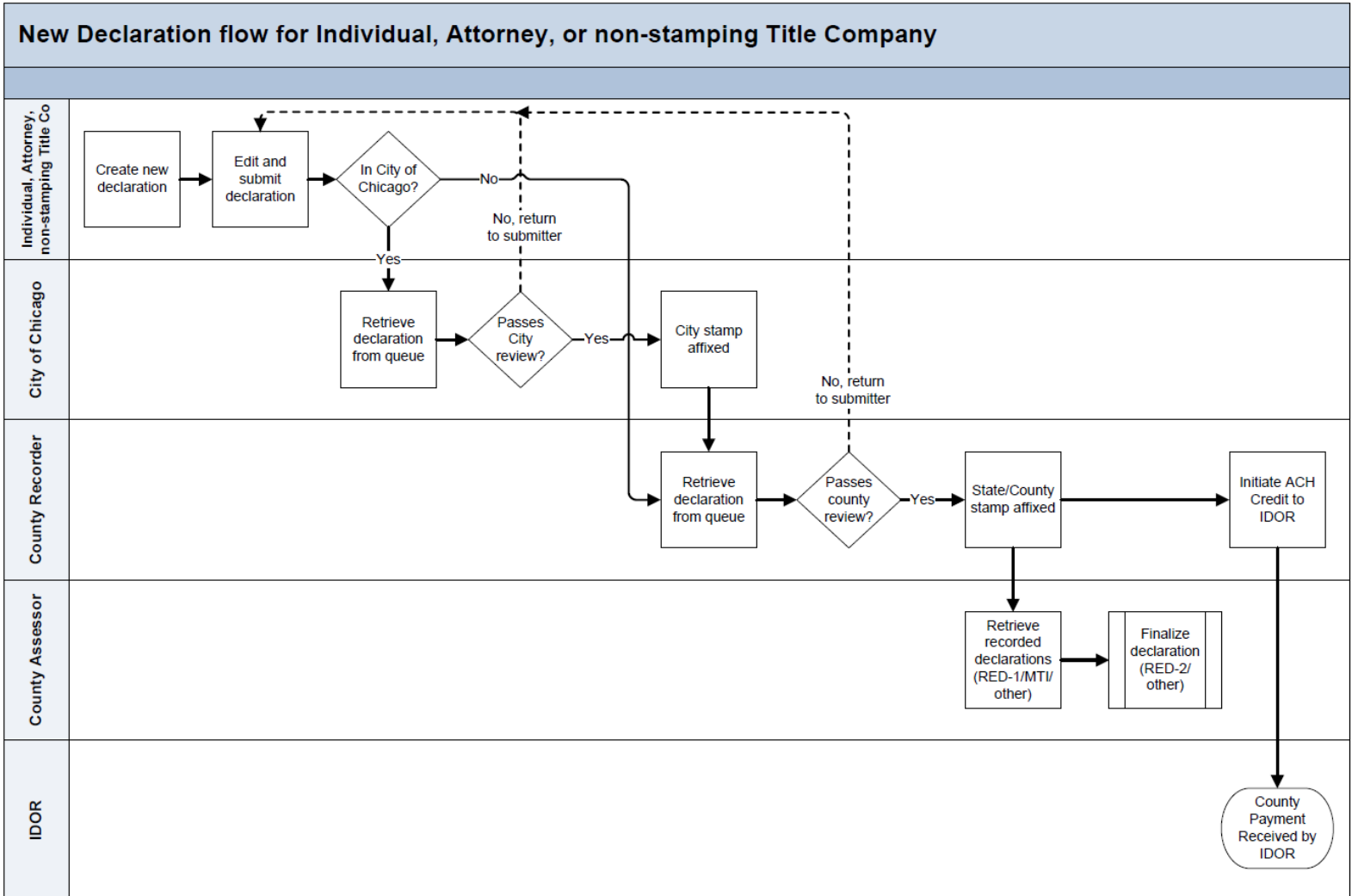
# Features of MyTax Illinois

- File Property Tax Declarations
- Remit payments for PTAX stamps to IDOR
- The PTAX-203 in MyTax Illinois will closely resemble the paper form
- View and retrieve declarations for downloading or printing
- Ability to use web services to pass information to external systems

# Benefits for Everyone

- No requirement to pre-purchase stamps or maintain machines
- Electronic tracking throughout the life of a declaration – reduces paper!
- County sales ratio studies
  - More timely and accurate information
  - Declaration data is used to compute the annual sales ratio studies
- Speeds up tax cycle, resulting in tax bills being mailed on time
- Automated calculations decrease errors

# PTAX-203 Flow (Draft)





# Flow Example

- A title company in a MyTax Illinois county creates the PTAX-203 and submits it.
- MyTax Illinois passes the completed PTAX form to the County Recorder.
  - If the Recorder has software, the PTAX form will be loaded into the software via webservice when needed for processing.
- Recorder approves PTAX-203, affixes stamps, and completes recording.
- Recorded PTAX-203s are transferred to the County Assessor (to RED-1 or webservice).
- Recorder pays for affixed stamps monthly to IDOR.

# Looking Ahead...

- We will be reaching out to the IACCR and CAO A to assist with distribution of information.
- Testing is scheduled to begin in December
  - Recruiting testers from title companies, attorneys, and county officials
- Outreach and training will take place after January 1

# Accessing MyTax Illinois

- Users will look for the MyTax Illinois Logo on the IDOR website home page
- [Tax.illinois.gov](http://Tax.illinois.gov)



# Questions

